

BR: D14

What is the hardest part to you re:
a speech and debate competition?

What are you most worried about?

Goals:

*Continue to discuss the importance
of research in being persuasive in a
Speech and Debate Competition*

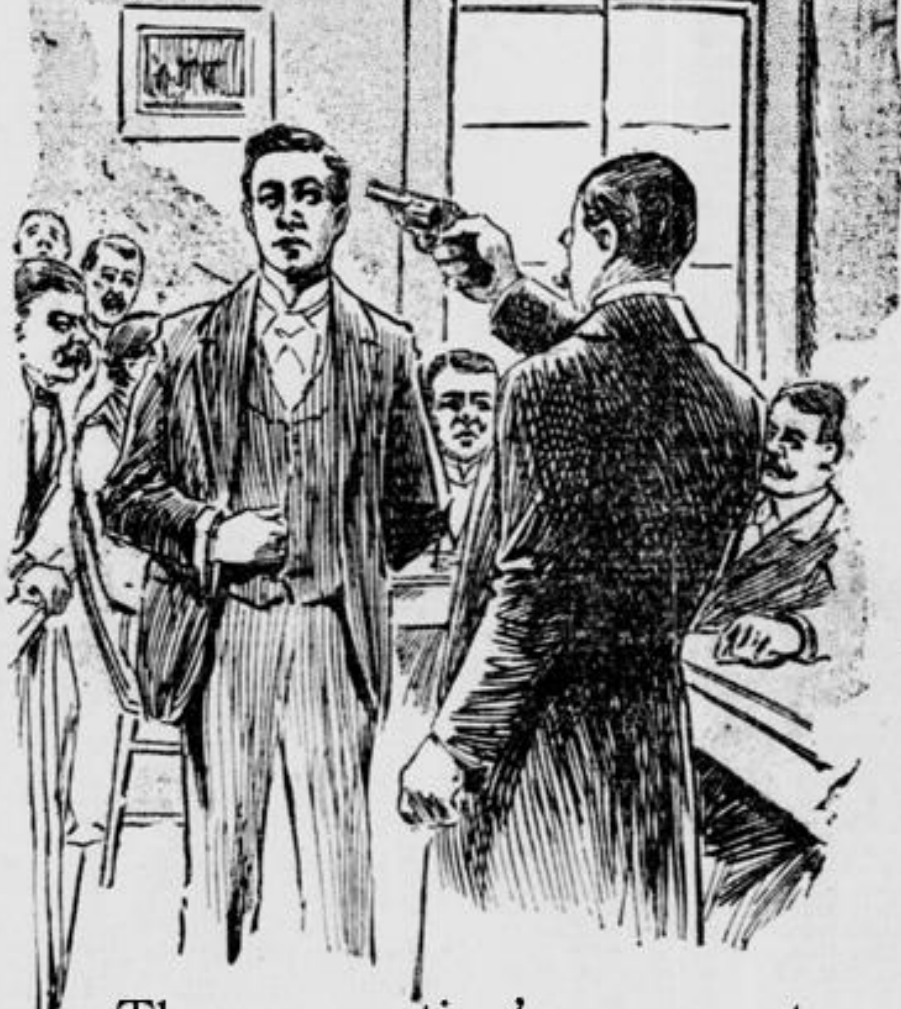
Reading:

Grab your textbook, and take 5 minutes to read the following pages (& answer the following questions as you do): pp 131-137

- ▶ *What is the first step Sam takes in his research? (p.131)*
- ▶ *How was the creation of several questions useful to Sam as he began his research? (p. 131, 132)*
- ▶ *How does Sam cite his quotations / ideas? (p. 133)*
- ▶ *What happens to Sam's original thoughts as he researches the topic of prayer in schools? (pp. 134-135)*
- ▶ *“Research is both a process of _____ and a process of establishing_____.” (p. 136)*
- ▶ *What does the author mean when they say to “put in your oar”? (p. 136)*

Logical Fallacy of the Day

- ▶ Appeal to Force / *argumentum ad baculum*
- ▶ This is the use (or threat of the use) of force to convince someone that you are right. Often the more subtle form is used in speech and debate:
- ▶ Form:
- ▶ *If you don't accept X as true, bad things will happen...*
- ▶ EXAMPLE:



The prosecution's argument
was difficult to counter.



If you don't agree with me, then you can't come to my party!



Research Time: Final Project!

- ▶ Get to work researching the next topic (remember to record citations via APA style)
- ▶ *“Resolved: The United States federal government should substantially raise the annual limit for employment-based immigrants, eliminate the per-country limits for employment-based immigrants, and exempt individuals with graduate degrees in science and engineering fields from the numerical limit.*